
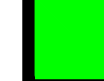



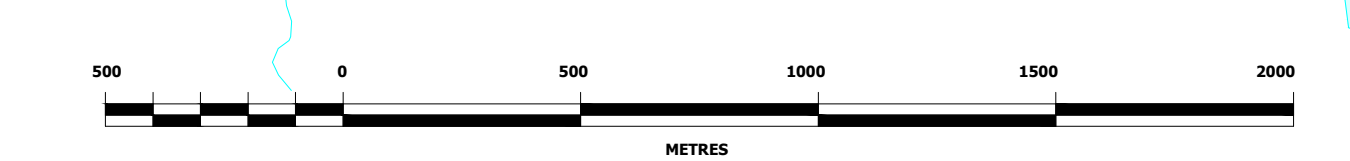
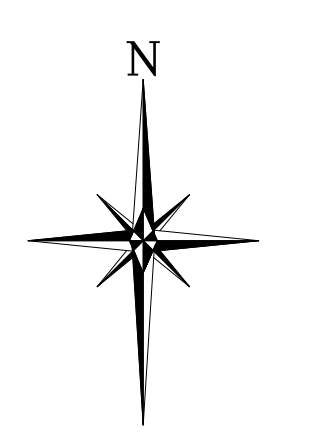
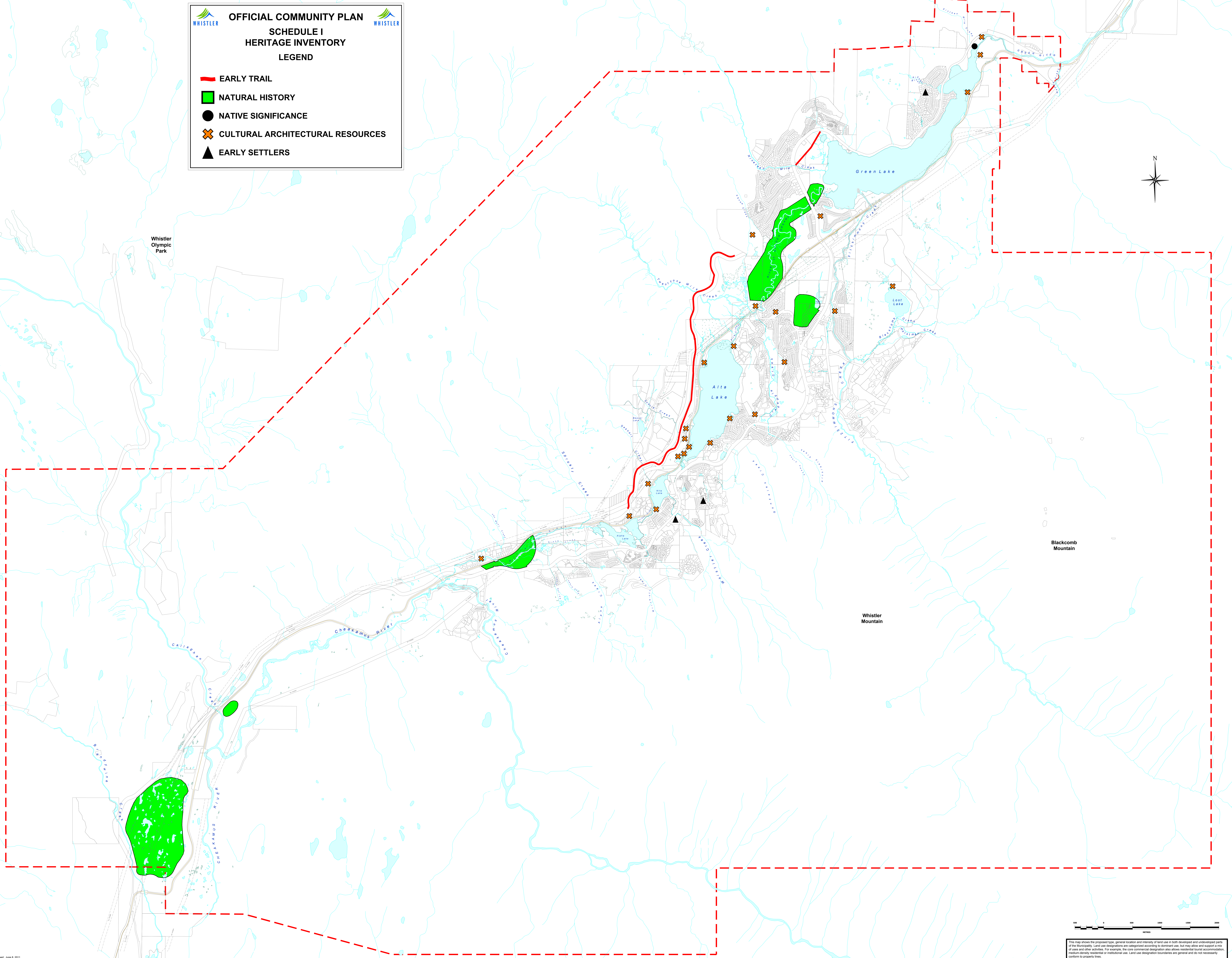


**WHISTLER OFFICIAL COMMUNITY PLAN**  
**SCHEDULE I**  
**HERITAGE INVENTORY**  
**LEGEND**

-  EARLY TRAIL
-  NATURAL HISTORY
-  NATIVE SIGNIFICANCE
-  CULTURAL ARCHITECTURAL RESOURCES
-  EARLY SETTLERS



This map shows the proposed type, general location and intensity of land use in both developed and undeveloped parts of the Municipality. Land use designations are categorized according to dominant use, but may allow and support a mix of uses and other activities. For example, the core commercial designation also allows residential tourist accommodation, medium-density residential or institutional use. Land use designation boundaries are general and do not necessarily conform to property lines.